

Outlook 2000-Specific Installation Notes

Changes to the Outlook MAPI system with Outlook 2000 means that the following steps have to be completed before installing Satlink.

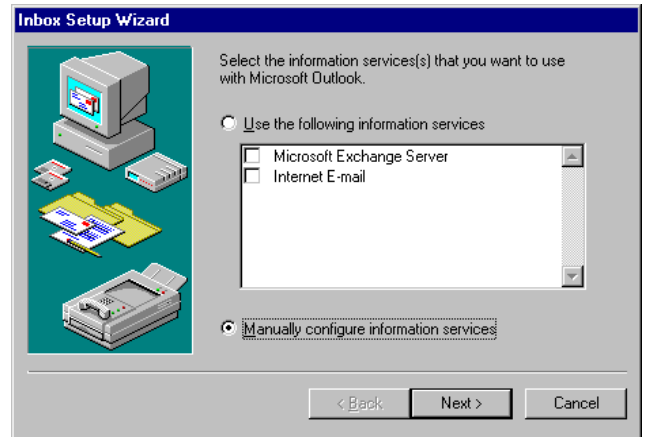
- First install Outlook 2000, then double click on the Outlook icon on your desktop. The following dialog box will appear. Press the **next** button.



- You no need to select the "Corporate or Workgroup" option (see below) and press the **next** button again.



- Select "Manually configure information services" and press **next** again.



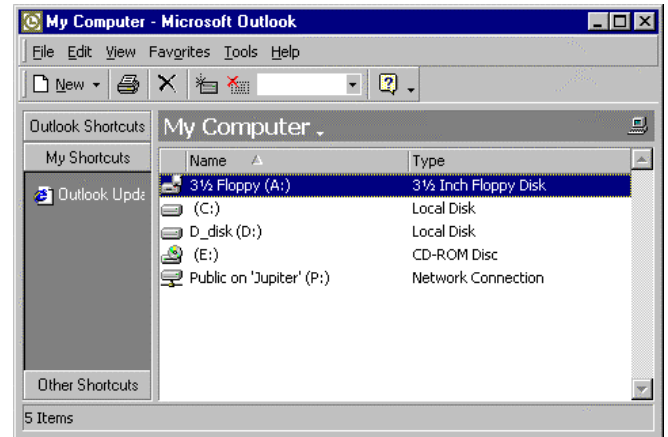
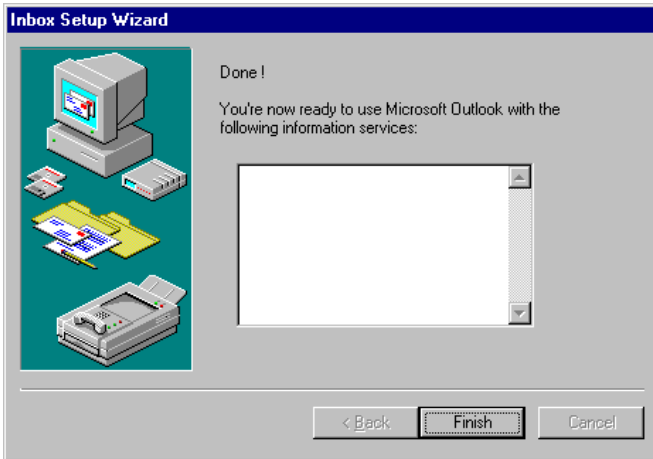
- You will now have the dialog box below. Press **next** again.



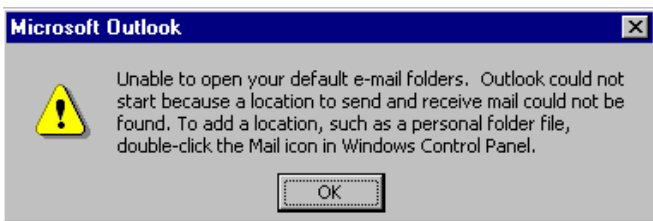
- The dialog box below will appear. Press **OK** to continue.



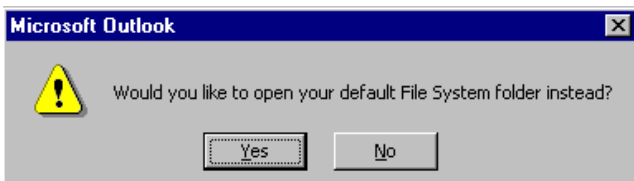
- Now you need to press the **Finish** button.



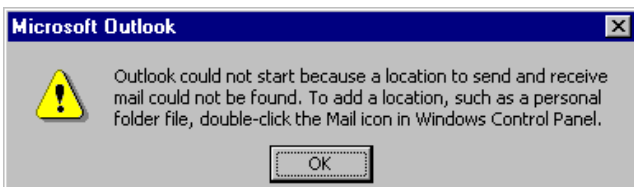
- You will now be presented with the following box. Press OK



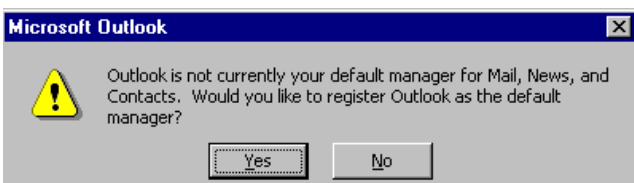
- Now say **Yes** to proceed.



- Press the **OK** button.



- Now press **OK** to make Outlook the default mail client.



- The final step is to now exit Outlook by choosing **Exit and Logoff** from the **File** menu. Once this is complete you can proceed with the Satlink installation as normal.